



# Budget Update

---

**Board Finance and Audit Sub-Committee**

Wednesday, November 18, 2020

# Update

---

**01. FY20-21 Budget Update**

---

**02. Enrollment/Apportionment**

**03. FY21-22 Planning**

---

---

---



# Fiscal Triggers

---

Federal government did not pass another coronavirus relief package — dashing California's hope of reversing \$11 billion in cuts to state employee salaries, courts and higher education. Without an influx of federal funding, California will stare down a projected \$8.7 billion budget deficit next year.



# Enrollment & Apportionment

<b>Kern Community College District</b>				
<b>Unrestricted FTES Apportionment Protection</b>				
<b>Two methods available to Districts in order to avoid revenue losses from declining FTES</b>				
1. Emergency Conditions FTES Allowance --FTES declines offset using prior year P1 revenues. This will only be available in 2020-21				
2. Stabilization Mechanism -- Part of the SCFF -- FTES decline offset for one year to keep District whole				

## 2020-21 Fiscal Year Projections

FTES Category	2019-20 Funded FTES (P1)	2020-21 Adopted Budget Funded FTES	FTES Revenue 2020-21 Adopted Budget	Emergency Condition FTES Allowance (2019-20 P1)	Change
Credit (3 year avg)	20,259.50	20,259.50	81,313,764.00	81,313,764.00	-
Incarcerated Credit	556.23	556.23	3,127,092.00	3,127,092.00	-
Special Admit Credit	1,176.80	1,176.80	6,615,900.00	6,615,900.00	-
CDCP	42.06	42.06	236,459.00	236,459.00	-
Non-Credit	71.33	71.33	241,140.00	241,140.00	-
<b>Total</b>	<b>22,105.92</b>	<b>22,105.92</b>	<b>91,534,355.00</b>	<b>91,534,355.00</b>	<b>-</b>

FTES Category	2019-2020 Projected Final Funded (R1)	2020-21 Projected Funded FTES	Percent Change	\$ Rate per FTES	Projected 2020-21 FTES Revenue
Credit (3 year avg)	20,071.42	19,750.55	-1.60%	4,009.00	80,466,322.78
Incarcerated Credit	988.15	988.15	0.00%	5,621.94	5,555,320.01
Special Admit Credit	1,840.24	1,840.24	0.00%	5,621.94	10,345,718.87
CDCP	42.38	42.38	0.00%	5,621.94	238,257.82
Non-Credit	68.21	68.21	0.00%	3,380.63	230,592.77
<b>Total</b>	<b>23,010.40</b>	<b>22,689.53</b>	<b>-1.39%</b>		<b>96,836,212.25</b>

All FTES Categories are projected to exceed 2019-20 but funded growth is set at 0% EXCEPT Credit. Credit would trigger stabilization, no revenue loss in 2020-21.

# Enrollment & Apportionment

2021-22 Fiscal Year Projections					
FTES Category	2020-21 Projected Funded FTES	2021-22 Projected Funded FTES	Percent Change	\$ Rate per FTES	Projected 2020-21 FTES Revenue
Credit (3 year avg)	19,750.55	20,011.15	1.32%	4,009.00	79,179,954.95
Incarcerated Credit	988.15	988.15	0.00%	5,621.94	5,555,320.01
Special Admit Credit	1,840.24	1,840.24	0.00%	5,621.94	10,345,718.87
CDCP	42.38	42.38	0.00%	5,621.94	238,257.82
Non-Credit	68.21	68.21	0.00%	3,380.63	230,592.77
<b>Total</b>	<b>22,689.53</b>	<b>22,950.13</b>	<b>1.15%</b>		<b>95,549,844.42</b>
<b>320 Report</b>					
	<b>FTES Generated</b>	<b>Funded</b>	<b>Not Funded</b>	<b>Carried Over</b>	
<b>2017-18 (Actual)</b>	22,540.14	22,532.47	7.671	0	
<b>2018-19 (Actual)</b>	24,485.24	21,554.69	0	1,824.77	
<b>2019-20 (FinalProj)</b>	27,083.06	23,010.40	507.34	3,024.59	
<b>2020-21 (Proj)</b>	26,687.82	22,689.53	1,013.60	3,024.59	
<b>2021-22 (Proj)</b>	26,687.82	22,950.13	1,013.60	3,024.59	

All FTES Categories are projected to exceed 2019-20 but funded growth is set at 0% EXCEPT Credit.



FY21-22

---

# System Budget Planning



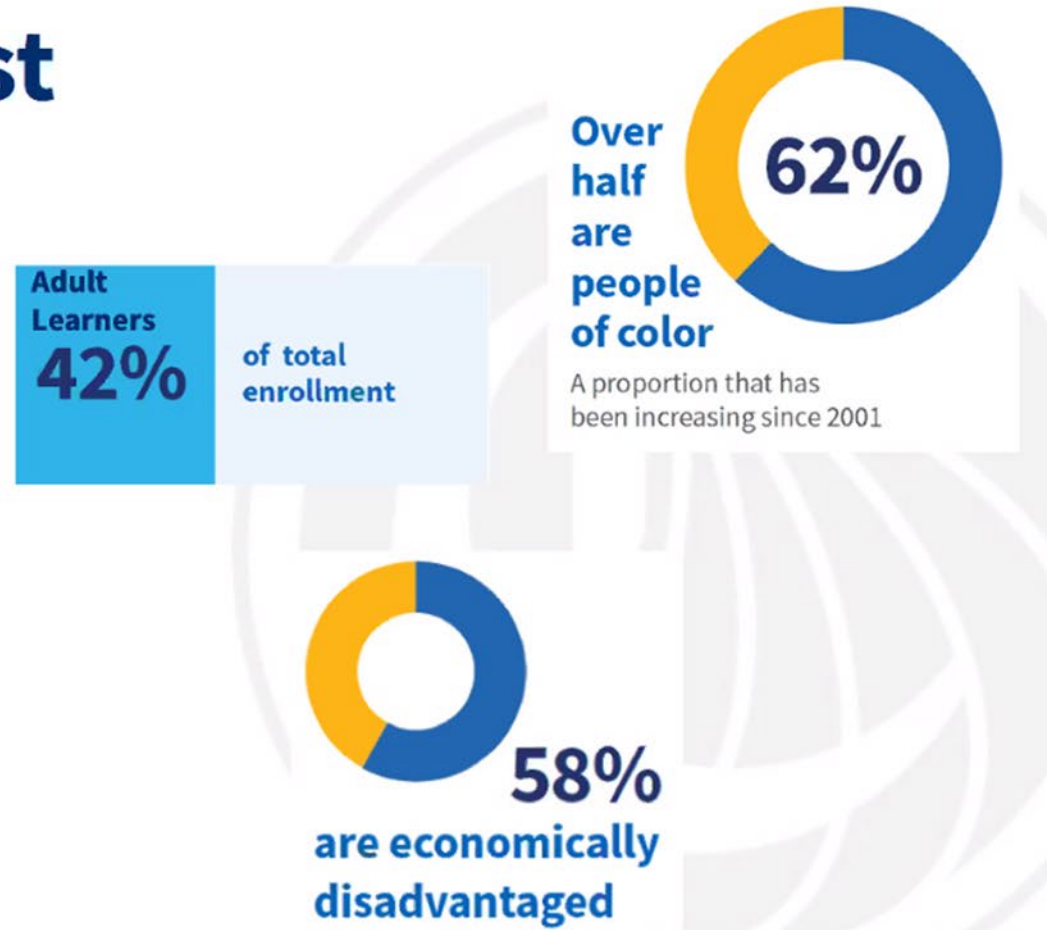
California Community Colleges



# 2021-22 Budget Request

## PROTECT 2.1 MILLION STUDENTS FROM BUDGET CUTS

Funding protections would enable responsive education, improve the online education ecosystem, and prepare the workforce needed for California's recovery.



# 2021-22 Budget Request

## ONLINE EDUCATION INFRASTRUCTURE

Provide a robust and equitable online infrastructure for all CCC students and faculty during the statewide emergency by expanding technical support, increasing online tutoring and other critical student support services.

## EXPANSION OF MENTAL HEALTH SERVICES

For many young adults, the California Community Colleges represents their best, and perhaps only, access point for mental health services. It's time to provide more Proposition 63 funds to deliver quality mental health services to students.



# Non-Proposition 98 Request

<b>NON-PROPOSITION 98 Funds</b>	<b>REQUEST AMOUNT</b>
<i>Foundational Resources</i>	
<b>Board of Governors' Capital Outlay Program</b>	\$727 million (one-time bond funds)
<i>Targeted Resources to Address Student Needs</i>	
<b>Expansion of Mental Health Services (Proposition 63)</b>	\$ 10 Million ongoing
<b>Cal Grant Reform</b>	Policy Changes
<i>Expansion of State Supports to Serve System Needs</i>	
<b>Core Support for CCCC Operations</b>	\$800,000 ongoing



## FCMAT Alert

### Correctly Sizing a Community College District's Management Structure and Staffing

“The time to correctly size community college districts is now. Using the California community college standards, making data-driven decision, and creating and executing a purposeful plan for solvency can help districts eliminate deficit spending.”



California Community Colleges

# A PLAN FOR AN EQUITABLE RECOVERY

## 2021-22 SYSTEM BUDGET & LEGISLATIVE REQUEST

[https://docs.google.com/forms/d/e/1FAIpQLSdjUn5I9PzOv\\_5RpDq4tQNkHGKPaSOK2FYhdTsqHpUAoh9ryw/vi/ewform?usp=sf\\_link](https://docs.google.com/forms/d/e/1FAIpQLSdjUn5I9PzOv_5RpDq4tQNkHGKPaSOK2FYhdTsqHpUAoh9ryw/vi/ewform?usp=sf_link)



*"It simply is inefficient to enroll students in programs that are not adequately supported with institutional resources."  
— The Century Foundation, 2019*

### PROTECT 2.1 MILLION STUDENTS FROM BUDGET CUTS

Funding protections would enable responsive education, improve the online education ecosystem, and prepare the workforce needed for California's recovery.

### INVEST IN THE DIVERSIFICATION OF FACULTY AND STAFF

Improving faculty and staff diversity is vital to ensuring students can identify with faculty and staff to help them succeed. This means accelerating Equal Employment Opportunity implementation, including a pilot fellowship program to improve faculty diversity hiring, expanding full-time faculty, and support for part-time faculty. We need to advance anti-racism in curriculum while keeping transfer pathways seamless.

### SYSTEM WIDE BROADBAND CONNECTIVITY

Support California Community Colleges in addressing the digital divide through investment in essential infrastructure for broadband connectivity.

### ONLINE EDUCATION INFRASTRUCTURE

Provide a robust and equitable online infrastructure for all CCC students and faculty during the statewide emergency by expanding technical support, increasing online tutoring, and other critical student support services.

### EXPANSION OF MENTAL HEALTH SERVICES

For many young adults, the California Community Colleges represents their best, and perhaps only, access point for mental health services. It's time to provide more Proposition 63 funds to deliver quality mental health services to students.

### EMERGENCY RESPONSE BLOCK GRANTS

Community Colleges need flexible block grant for costs associated with addressing the COVID-19 pandemic. These grants will help scale innovative education models, direct supports for students, meet equipment needs, improve professional development of faculty and staff, and insure continuity of education.